



SUSTAINABLE SOLUTIONS FOR

Criminal Justice Reform

JENNIFER HANCOCK, PRESIDENT & CEO

JANUARY 21, 2022

Sustainable Solutions

- Dignity Bill 1.0 and 2.0
- Pre-trial diversion bill(drafted)
- Halfway back
- Freedom House



Creating Recovery Ready Communities

VOA Mid-States is expanding to establish comprehensive programming to meet the complex health needs of residents of Southeastern Kentucky. By partnering with local, state and national leaders and working closely with community leaders we are building lasting solutions to the region's most pressing challenges.



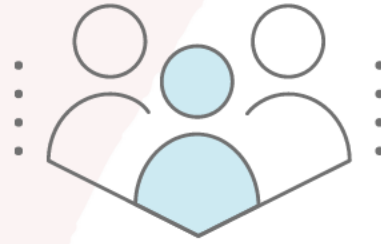
Health & Healthcare

- Freedom House substance use disorder program for pregnant and parenting women
- Comprehensive Oral Health Care program
- Harm reduction services



Neighborhood & Built Environment

- Quality & affordable housing
- Joint venture with AdventHealth building on main street
- Partnerships with local farmers and AppHarvest to ensure access to fresh, affordable, and healthy foods



Social & Community Context

- Recovery Community Center
- Restorative Justice programming for youth
- Family Recovery Court



Economic Stability

- Moving people from recovery to the workforce
- Workforce Opportunities for Rural Communities
- Mountain Market Social Enterprise
- Quality, accessible child care



Education

- Early childhood education and education readiness
- Trauma-informed child-based interventions
- Job training

Restorative Justice

Restorative Justice serves young people who come in contact with the criminal justice system and allows victims of crime to participate more fully in the resolution of the offense that has been done – with a focus on seeking solutions and making amends.

The Process:

1. The offender conference meeting.
2. The victim conference meeting.
3. The Final Conference.
4. Ongoing Case Management.

\$1,014 per case

The cost to divert and serve individuals in the restorative justice process

23%

Recidivism rate* for RJL participants referred and completing the program

\$3,166 per case

The cost to adjudicate cases in the court system and probate offenders

56%

Recidivism rate* for those referred who did not complete the program¹

*“Recidivism rate” is defined here as the percentage of individuals with no new arrests within 12 months of discharge from the program. Typically, 50-60% of participants complete the program over a 6 month period.



7'0"
6'6"
6'0"
5'6"
5'0"
4'6"
4'0"
3'6"
3'0"

Inmate - 195034

